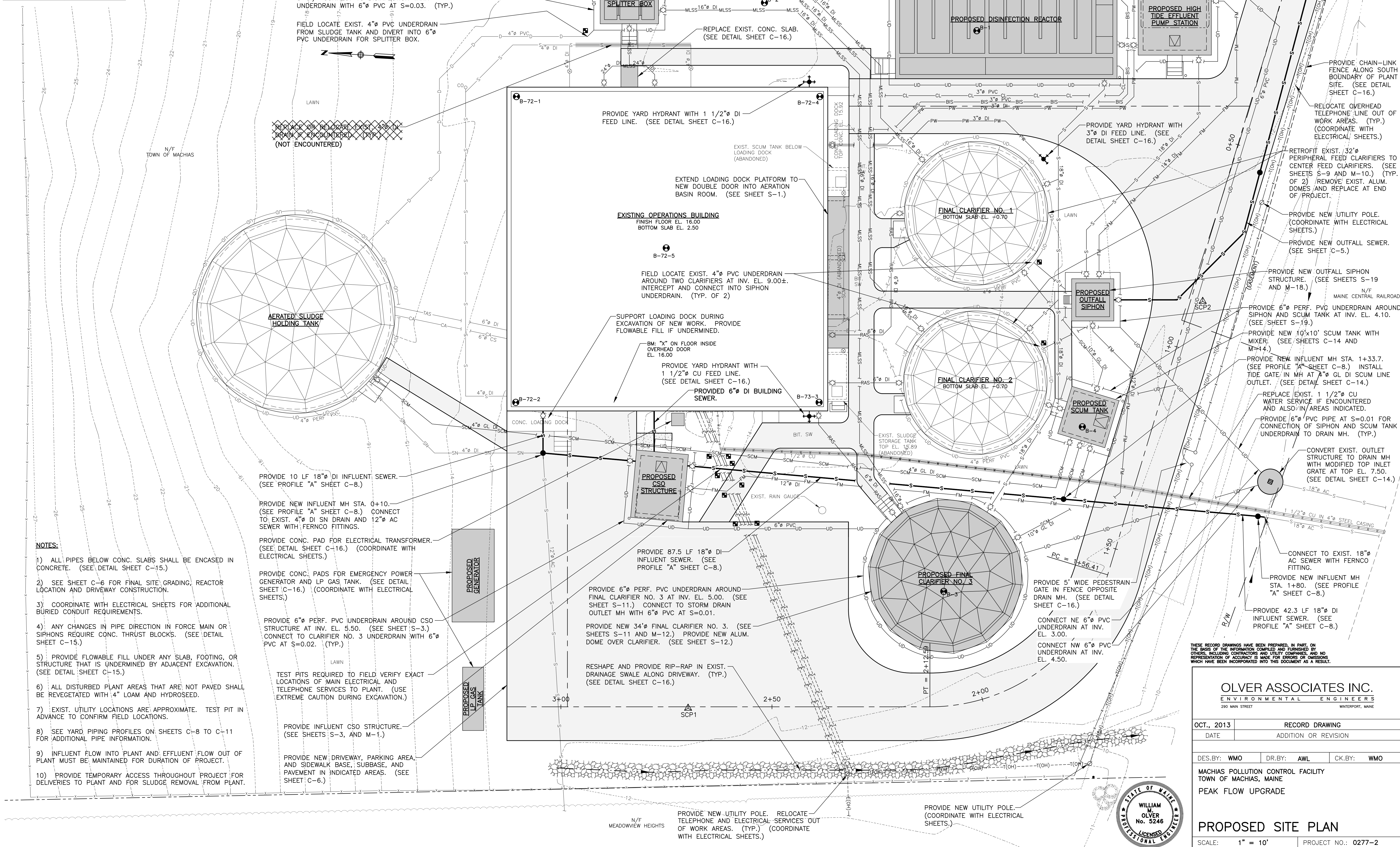


BORING/PROBE #	LEDGE ELEVATION
B-1	-18.0
B-2	-19.5
B-3	(NR @ -22.6)
B-4	(NR @ -19.9)
B72-1	-7.4
B72-2	-17.9
B72-3	-7.1
B72-4	-7.1



- NOTES:**
- 1) ALL PIPES BELOW CONC. SLABS SHALL BE ENCASED IN CONCRETE. (SEE DETAIL SHEET C-15.)
 - 2) SEE SHEET C-6 FOR FINAL SITE GRADING, REACTOR LOCATION AND DRIVEWAY CONSTRUCTION.
 - 3) COORDINATE WITH ELECTRICAL SHEETS FOR ADDITIONAL BURIED CONDUIT REQUIREMENTS.
 - 4) ANY CHANGES IN PIPE DIRECTION IN FORCE MAIN OR SIPHONS REQUIRE CONC. THRUST BLOCKS. (SEE DETAIL SHEET C-15.)
 - 5) PROVIDE FLOWABLE FILL UNDER ANY SLAB, FOOTING, OR STRUCTURE THAT IS UNDERMINED BY ADJACENT EXCAVATION. (SEE DETAIL SHEET C-15.)
 - 6) ALL DISTURBED PLANT AREAS THAT ARE NOT PAVED SHALL BE REVEGETATED WITH 4" LOAM AND HYDROSEED.
 - 7) EXIST. UTILITY LOCATIONS ARE APPROXIMATE. TEST PIT IN ADVANCE TO CONFIRM FIELD LOCATIONS.
 - 8) SEE YARD PIPING PROFILES ON SHEETS C-8 TO C-11 FOR ADDITIONAL PIPE INFORMATION.
 - 9) INFLUENT FLOW INTO PLANT AND EFFLUENT FLOW OUT OF PLANT MUST BE MAINTAINED FOR DURATION OF PROJECT.
 - 10) PROVIDE TEMPORARY ACCESS THROUGHOUT PROJECT FOR DELIVERIES TO PLANT AND FOR SLUDGE REMOVAL FROM PLANT.

THESE RECORD DRAWINGS HAVE BEEN PREPARED, IN PART, ON THE BASIS OF THE INFORMATION COMPILED AND FURNISHED BY OTHERS, INCLUDING CONTRACTORS AND UTILITY COMPANIES, AND NO REPRESENTATION OF ACCURACY IS MADE FOR ERRORS OR OMISSIONS WHICH HAVE BEEN INCORPORATED INTO THIS DOCUMENT AS A RESULT.

OLVER ASSOCIATES INC.
 ENVIRONMENTAL ENGINEERS
 290 MAIN STREET WINTERPORT, MAINE

DATE: OCT., 2013 **RECORD DRAWING**
DATE: ADDITION OR REVISION

DES. BY: WMO **DR. BY:** AWL **CK. BY:** WMO

MACHIAS POLLUTION CONTROL FACILITY
 TOWN OF MACHIAS, MAINE
 PEAK FLOW UPGRADE

PROPOSED SITE PLAN

SCALE: 1" = 10' **PROJECT NO.:** 0277-2
DATE: DECEMBER, 2009 **SHEET:** C-2

